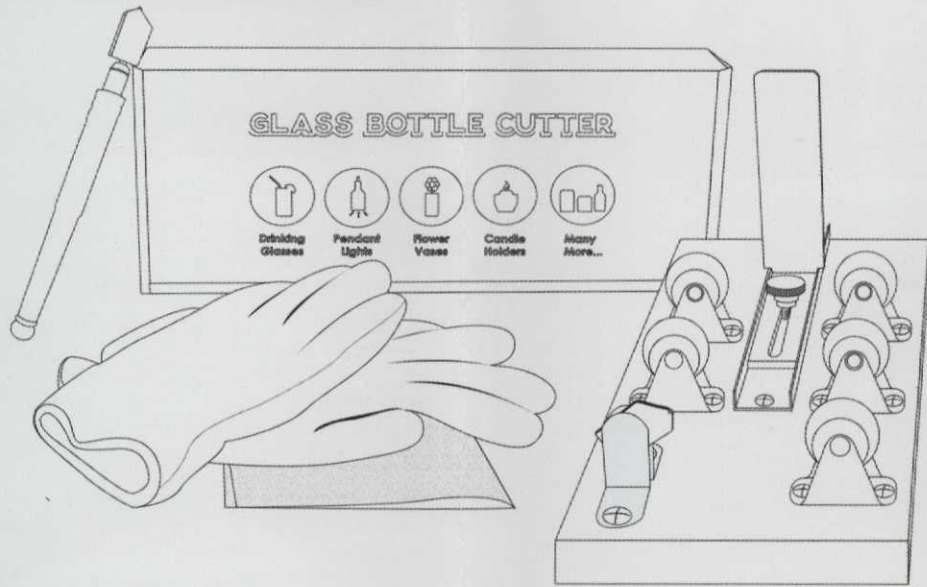
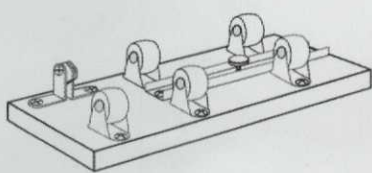


GLASS BOTTLE CUTTER



What's Included in the Package



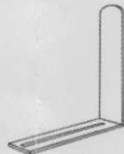
1x

Base with rollers



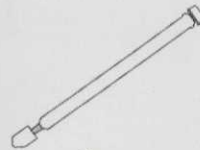
1x

Pair of Gloves



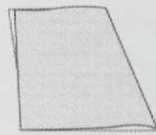
1x

L Shape back brace



1x

Glass Cutter



1x

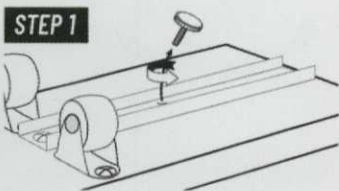
Sand Paper



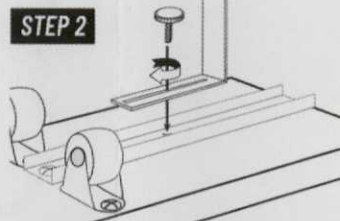
1x

Screw

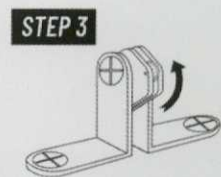
How To Assemble The Bottle Cutter



Loosen and remove knob screw.



Insert back brace into track and tighten the knob screw.



Adjust tightness of screw if necessary.



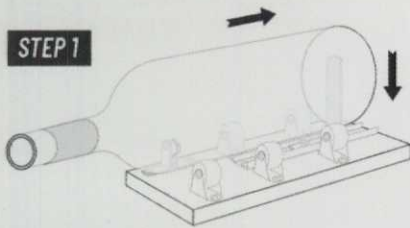
- VIDEO PROJECT TUTORIALS
- 24/7 ONLINE SUPPORT
- DOWNLOAD BONUS BOOK

Visit our club website to find amazing project ideas

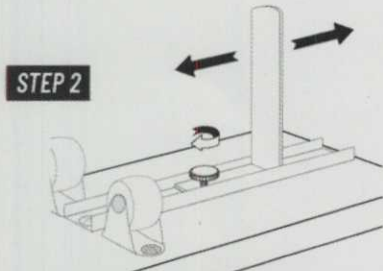
BOTTLECUTTERCLUB.COM



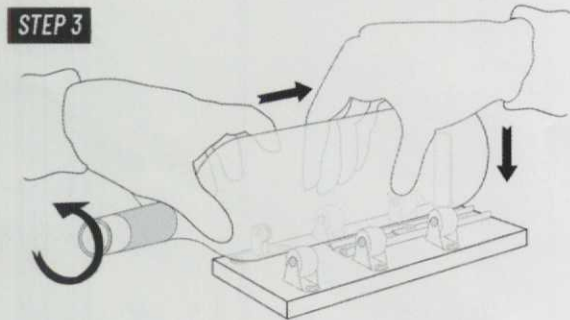
How To Use The Bottle Cutter



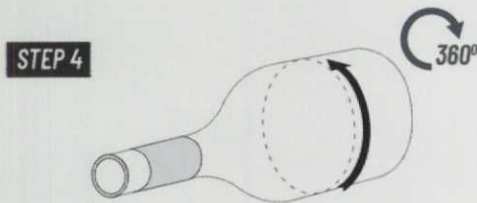
Position the bottle over the rollers.



Adjust the back brace so that it touches the bottom of the bottle. Tighten the screw again to hold it back in place.



Apply just enough downward pressure on the bottle so that it scores a line in the glass. Make sure to hold the bottle down towards the back brace at all times to keep a straight cut.



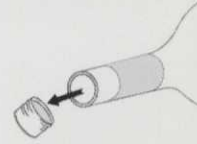
Keep your hand positioned in between the roller while applying pressure. Slowly turn the bottle until you reach the point where the score started. Do not score the bottle more than once.



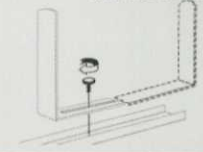
Make sure to wear the gloves first before cutting any bottle. Safety first.



Make sure NOT to leave the bottle cap on when using the device.



If you are cutting a shorter bottle, you can flip the back brace around so that it reaches the bottle.



STEP 5

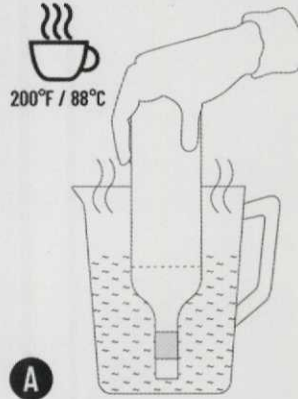
Prepare your hot and cold water. Recommended temperature for hot water is 200°F or 88°C. Recommended temperature for cold water is 45°F or 7°C.



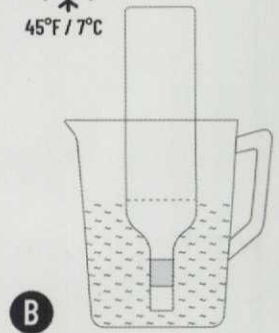
200°F / 88°C



45°F / 7°C



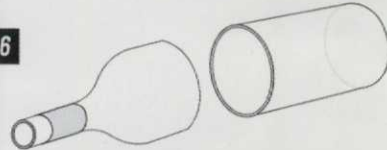
A



B

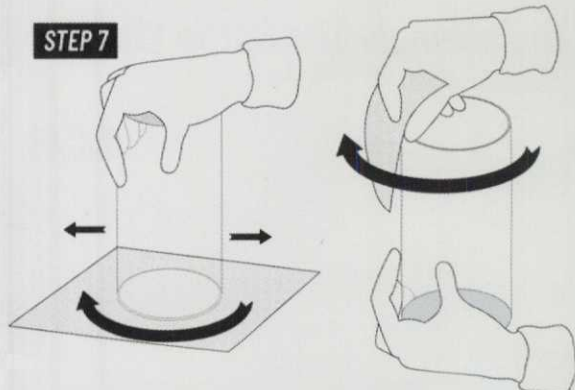
Heat up the score line. Dip the bottle into a tub or container of hot water and then switch to cold water, and make sure the water covers the cut.

STEP 6



Repeat steps A and B if necessary, until the bottle separates.

STEP 7



Use sandpaper to smooth the rough edges. To make even edge, put sandpaper on table and sand the top edge. Then sand the inner and outer corners of the glass edge by hand.

We're always here for you, no matter what!
Please email us for any questions or just to say Hi! at
hello@homeproshop.net

VISIT
WWW.BOTTLECUTTERCLUB.COM
TO GET EXCLUSIVE DISCOUNTS

10% OFF COUPON
FOR ALL PRO SHOP PRODUCTS

